

Papaya3 User Manual

Contents

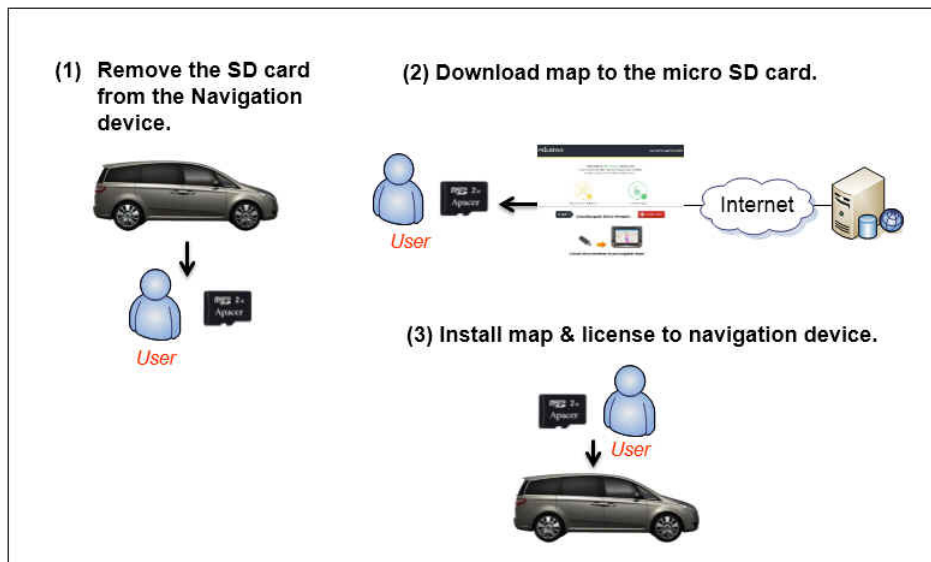
1. Scope.....	1
2. Preparations.....	1
3. First Step – Remove the SD card from the Navigation device (on the car).....	2
4. Second Step – Download map to the SD card (on the PC).....	2
5. Third Step - Install new map (on the car).....	12

1. Scope

This user manual provides step by step procedure how to update the map on the touchscreen navigation device.

2. Preparations

- Prepare an empty SD card. (at least 2GB)
- Computer with Papaya3 pre-installed. (OS on the laptop: WinXP、 Win7、 Win8)
- Internet connection



3. First Step – Remove the SD card from the Navigation device (on the car)



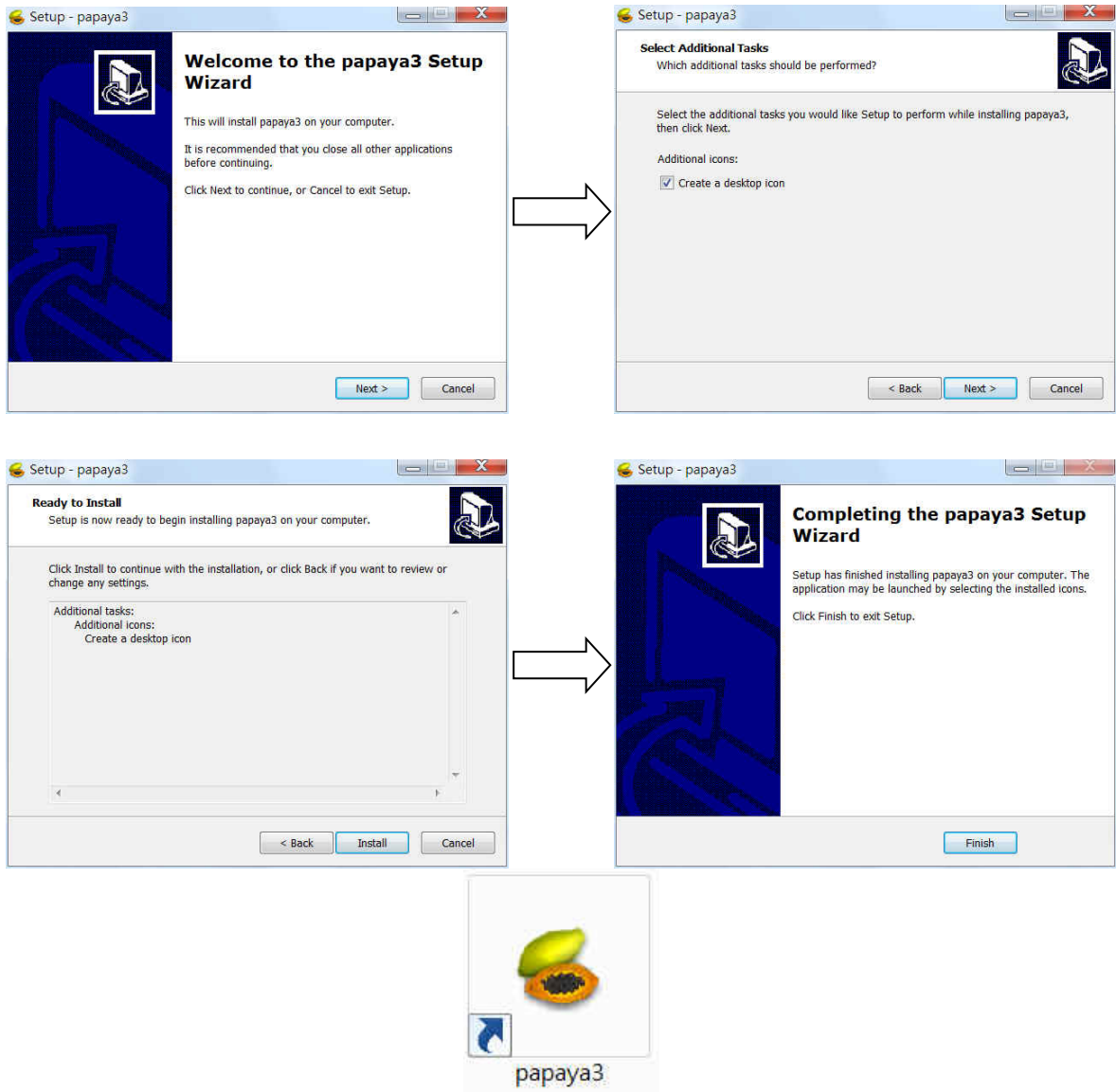
- 3-1. Turn off the navigation device.
- 3-2. Remove the SD card from the navigation device

4. Second Step – Download map to the SD card (on the PC)

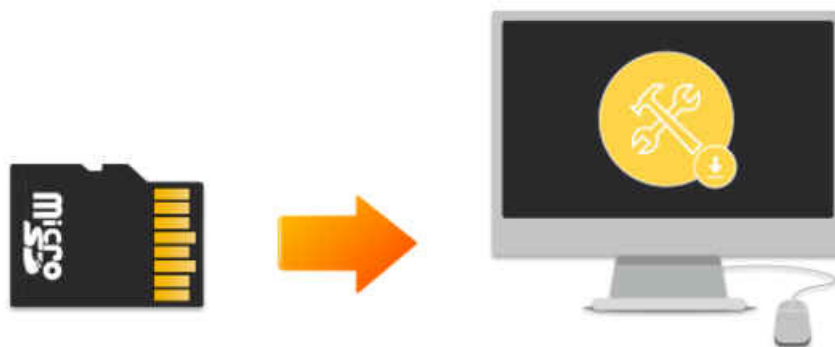
- 4-1. Download the Map Update Tool (Papaya 3) and install it on your computer.

A screenshot of the Polstar Navigation Maps Update software interface. At the top left is the Polstar logo, and at the top right is the text 'NAVIGATION MAPS UPDATE'. Below this is a paragraph: 'Please read the user manual in advance and watch the demonstration videos for step by step operation. It guides you how to complete the map update.' There are two icons: a yellow wrench and screwdriver icon with a download arrow, labeled 'Map Update Tool (Papaya 3)', and a green document icon with a download arrow, labeled 'User Manual (pdf)'. A white arrow points from the 'Map Update Tool' icon down to a file icon of a papaya, labeled 'papaya3_Setup.exe'.

4-2. Double-click **[Papaya3_Setup.exe]** to install the upgrade tool – Papaya3. After installation, there will be a desktop icon of Papaya3.



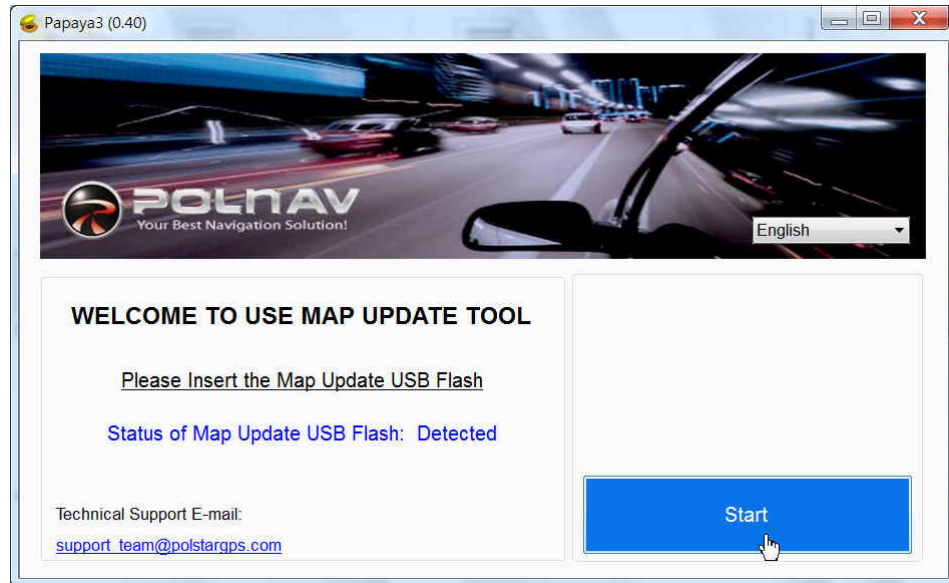
4-3. Insert the SD card into your computer.



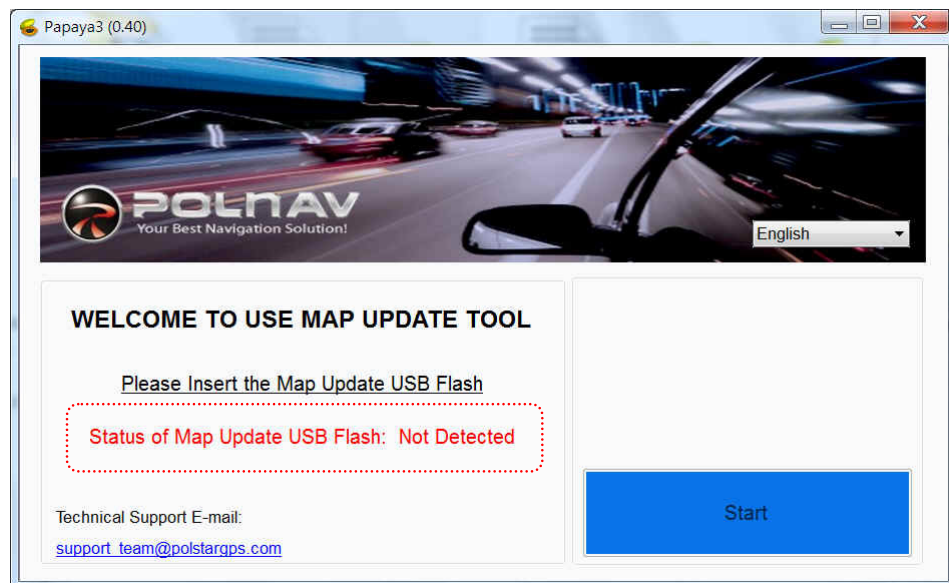
4-4. Execute the Papaya 3 by clicking the Papaya3 shortcut icon on the PC desktop.

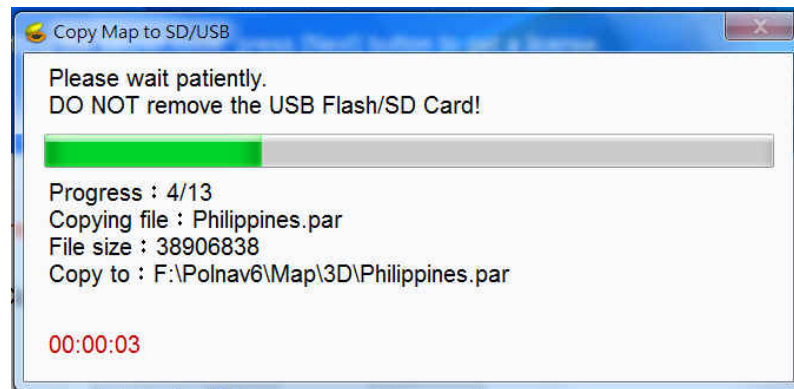
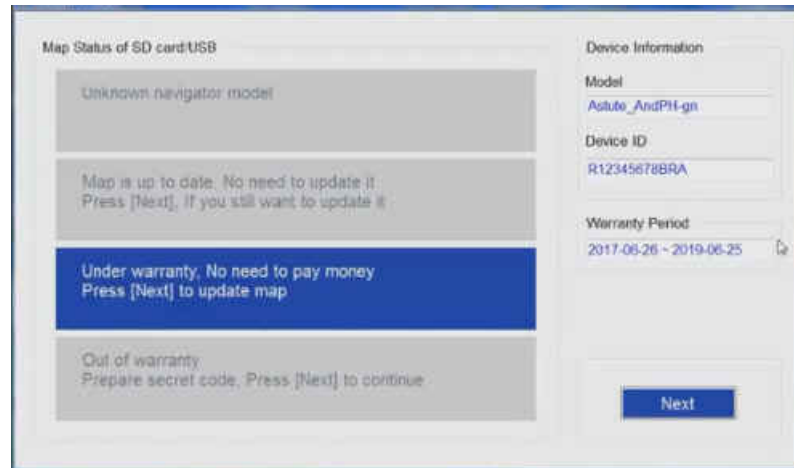


4-5. Click [Start] button to enter the main page of the Papaya3.



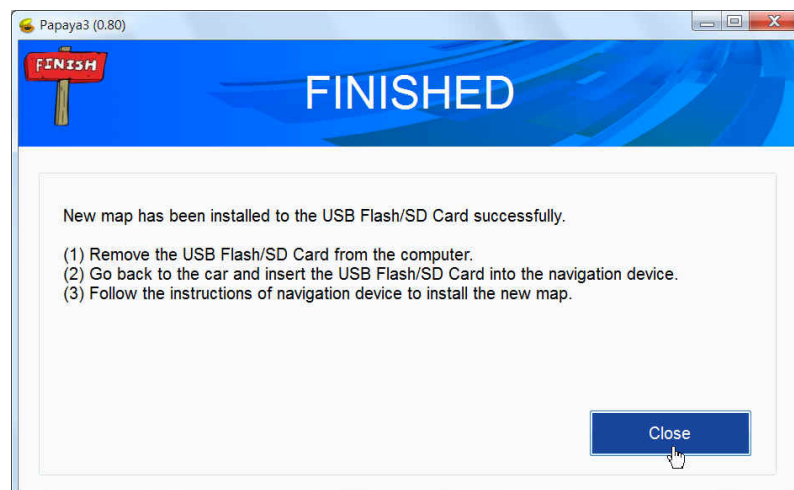
Note: If there is no SD card detected, there will be warning message blinking *in red* at the left side of the welcome page.



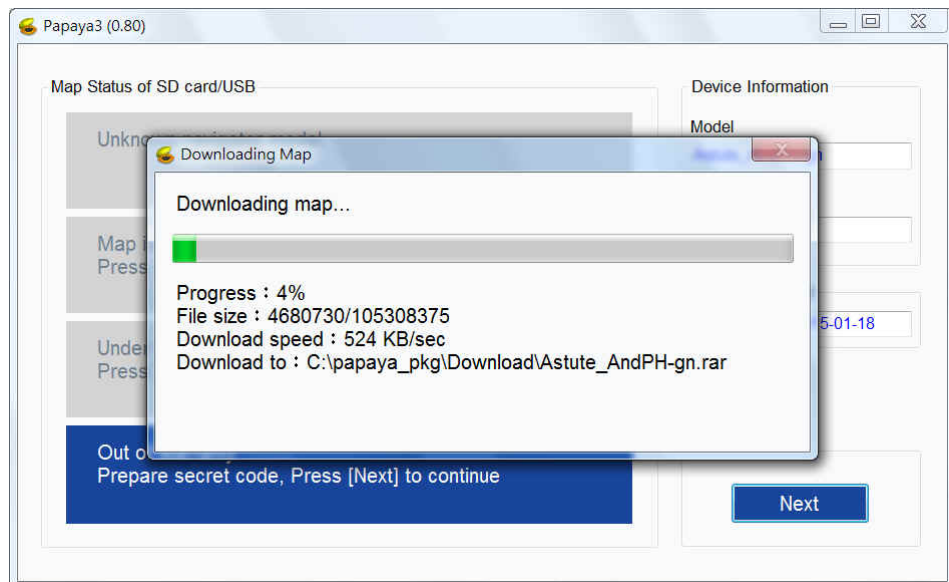
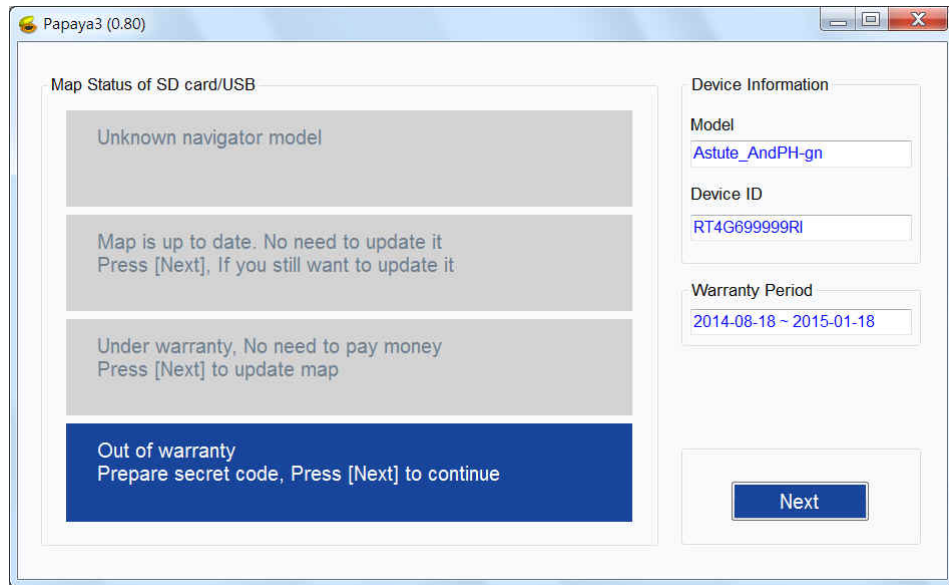


Note: Do not remove the SD card when copying the map to the SD card.

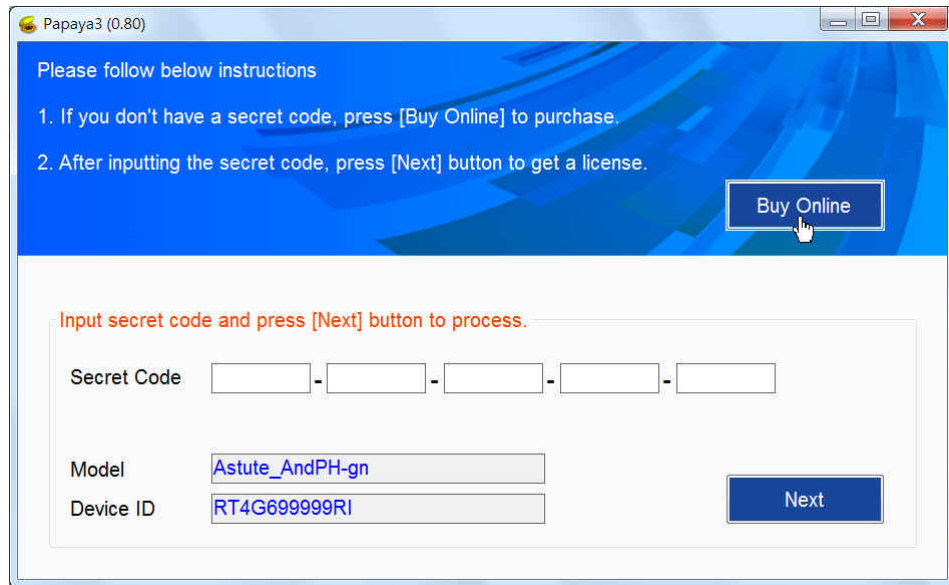
- 4-6. After installing new map in the SD card, click [Close] to close the Papaya3. Then, please take the SD card out of the PC and **go back to the car**.



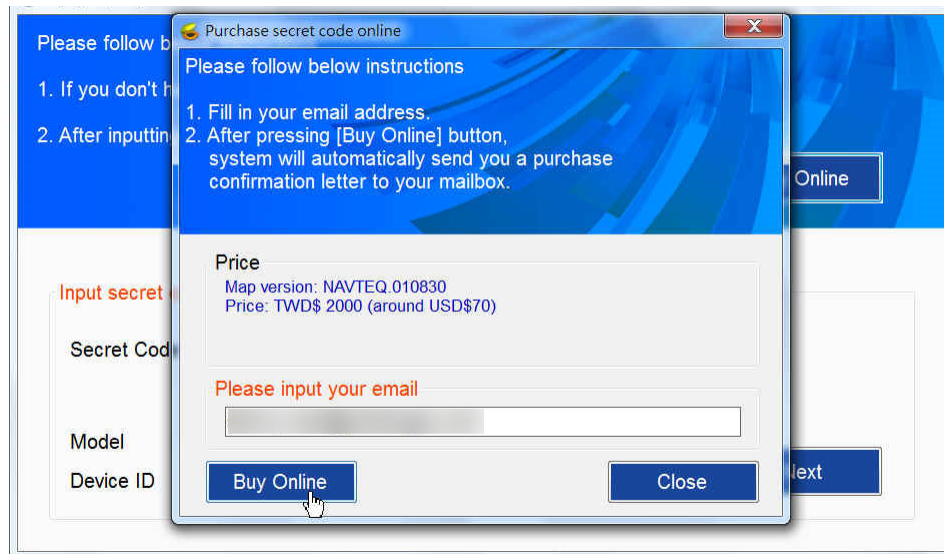
4-7. If the license of navigation software is out of warranty. Press [Next] to continue.



4-8. Click [Buy Online] on the right to process the Online Purchase process.



4-9. Enter your email and click [Buy Online] again.

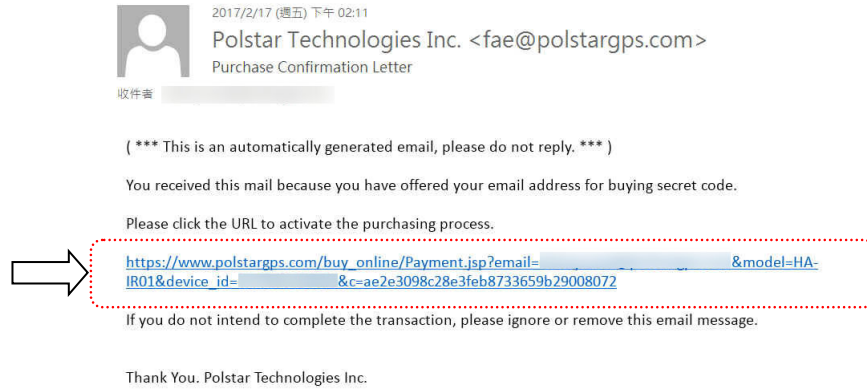


NAVIGATION MAP **UPGRADE**
專航地圖升級

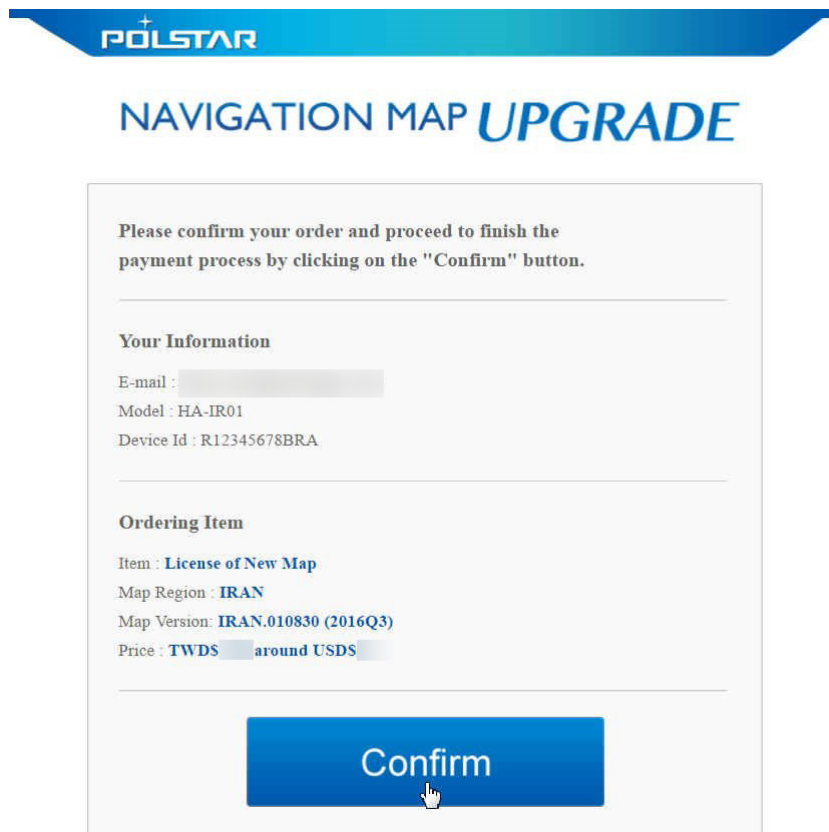
The letter has been sent successfully.

A confirmation letter has been sent to your mailbox. You will soon receive a letter containing a URL for activating the purchasing process within an hour. If you failed to receive this letter, please check the e-mail address you have provided.

4-10. Check your email and click the URL to activate the purchasing process.



4-11. Please confirm your order and Click [Confirm].



4-12. Enter Credit card number, and then click **[SEND]**. (We only accept Visa, Master and JCB card.)

The screenshot shows a payment page for 'polstar'. At the top, there is a banner for a mobile app with the text '開啟行動支付新生活' (Start a new life with mobile payment) and '快下載台灣支付 App 隨時可付款、隨處可使用、便利生活新幫手' (Download the Taiwan Payment App quickly, pay anytime, use anywhere, convenient life new helper). Below the banner are buttons for 'AVAILABLE ON THE App Store' and 'GET IT ON Google play'. The main form contains the following fields:

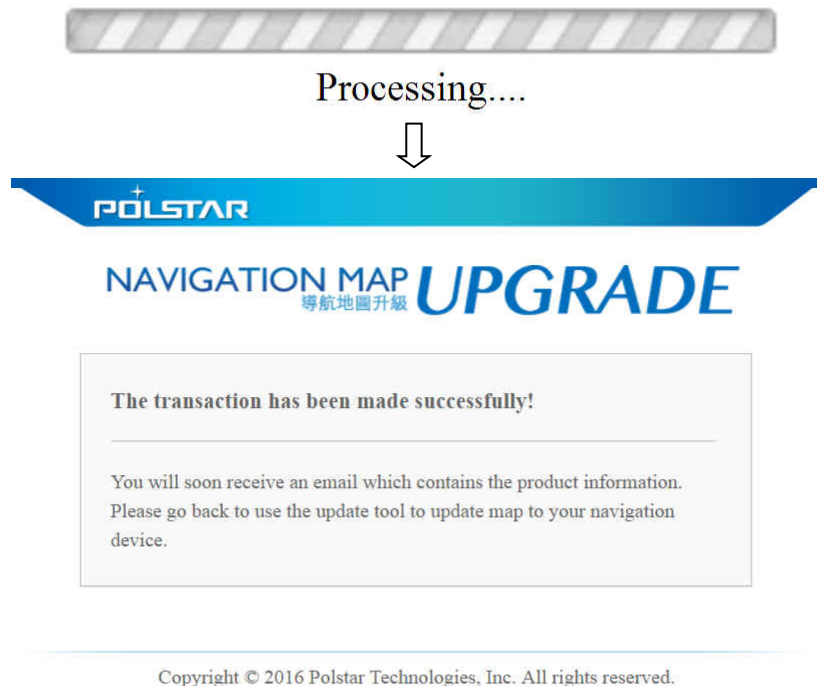
- Country: Taiwan
- Currency: New Taiwan Dollar
- Acquirer Bank: Cathat United Bank
- Order Number: 16090514545986
- Amount: NT\$
- Credit Card Number: (Four input boxes)
- Expiry Date: Month and Year dropdown menus
- Card Validation Code (CVV2) (or Card Verification Value (CVV2)): Illustration input box

A red dashed box highlights the credit card number and expiry date fields. Below the form is a button labeled '> SEND', also highlighted with a red dashed box. At the bottom, there is a 'Newweb Technologies' logo and a 'Global Guard' seal. The footer contains 'Newweb Technologies Copyright © 2016 Newweb Co., Ltd. All Right Reserved.'

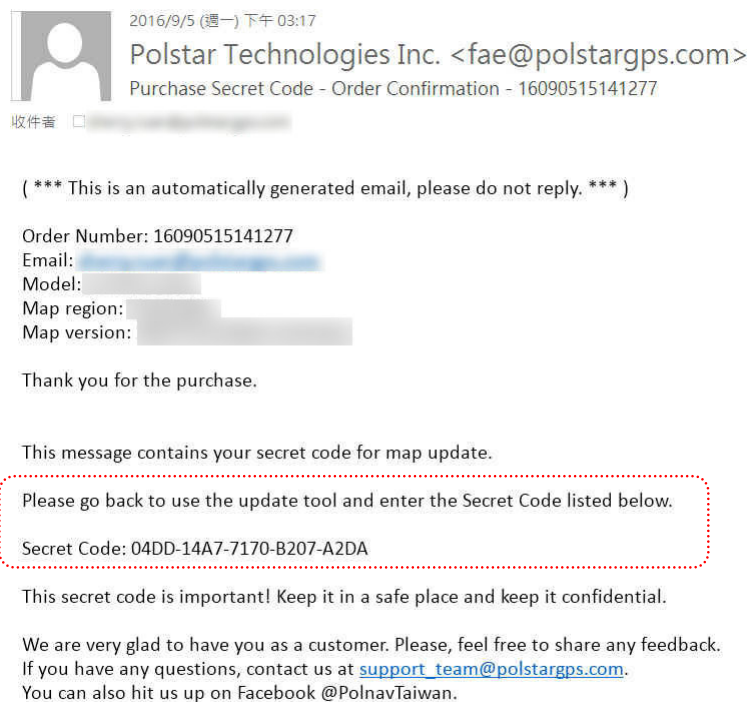
4-13. The web is obtaining authorization now ... it may take some time. Do not click 'Back' or 'Refresh' button. Click "OK".



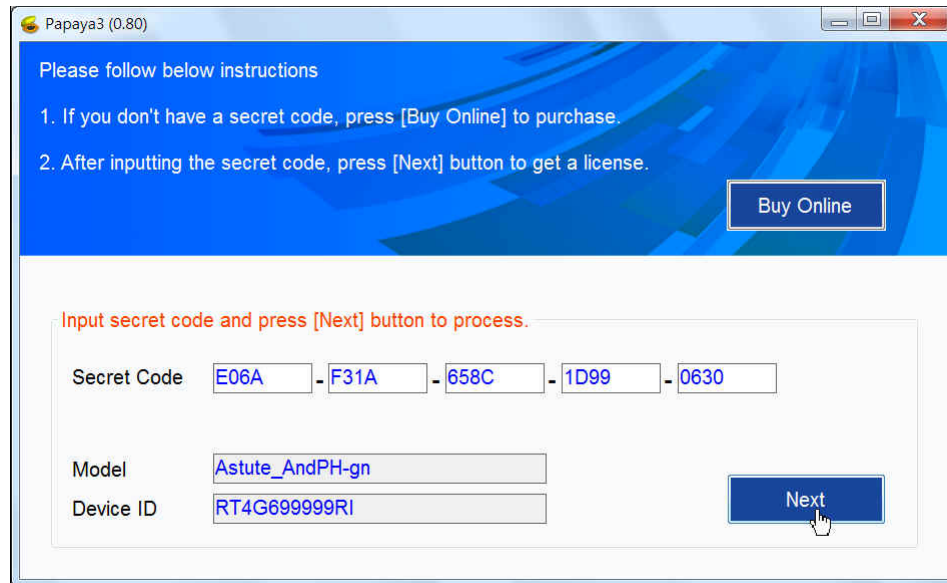
4-14. The transaction is processing. You will receive an email when it is done.



4-15. After transacting the payment, you'll receive an email containing the Secret Code (20 characters). Please check your Email.

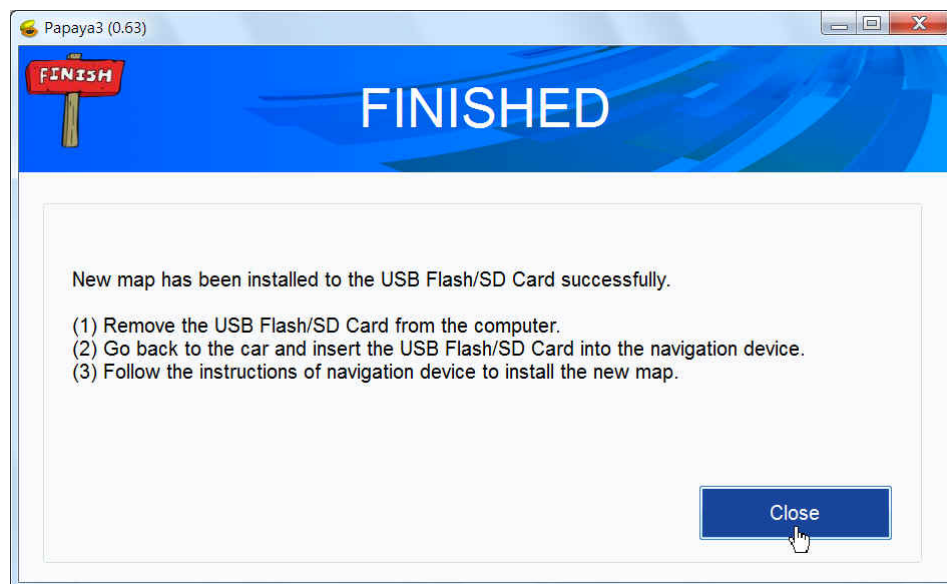


4-16. If you've received the Secret Code (20 characters), please go back to Papaya3. Enter the Secret Code (20 characters) into the Secret Code columns. There are totally 5 columns, enter 4 characters in each column. Then, click **[Get Key]**.



Note : The secret code contains 20 characters, including numbers and alphabets in capital.

4-17. After installing new map in the SD card, click [Close] to close the Papaya3. Then, please take the SD card out of the PC and **go back to the car**.



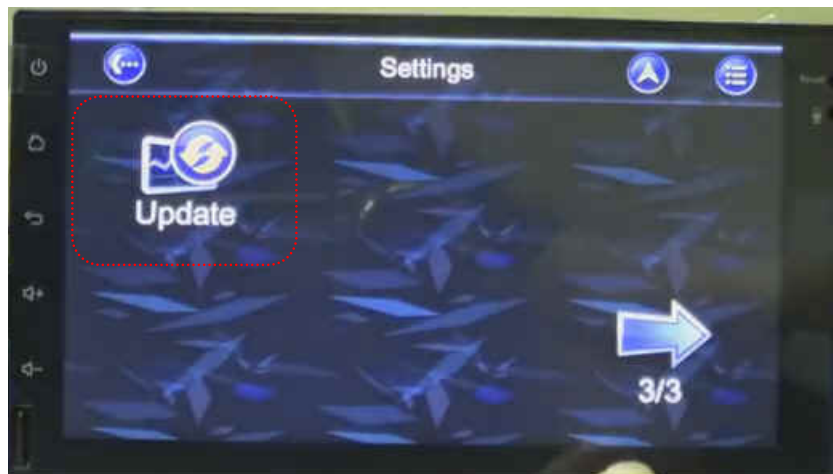
5. Third Step - Install new map (on the car)



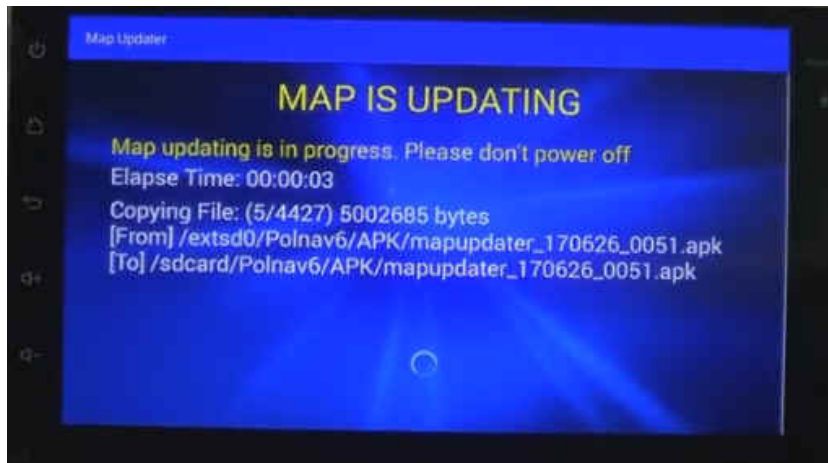
5-1. Insert the SD card (map pre-installed) into the navigation device.



5-2. Click the **[Update]** icon on the bottom right side.



5-3. Click **[UPDATE MAP]** proceed updates progress.



5-4. Click **[Close]** when map update has completed.

